



LABOR SITUATION

Office of Research
Danté Bartolomeo, Commissioner

FOR IMMEDIATE RELEASE

February 2025 Data
CT Unemployment Rate = 3.4%
US Unemployment Rate = 4.1%

CT jobs lower by 1,200 in February; state unemployment rate ticks up one-tenth to 3.4%

WETHERSFIELD, March 27, 2025 – Connecticut nonfarm industry employment declined 1,200 net jobs (-0.1%) in February 2025 to a level of 1,716,400 as the state’s jobless rate was up one-tenth of one percent to 3.4% (preliminary, seasonally adjusted data). Statewide payroll employment is now 12,900 (0.8%) positions higher than a year ago. The January 2025 preliminary job gain of 2,300 (0.1%) was lowered by 800 to a gain of 1,500 jobs (0.1%). The February 2025 preliminary Connecticut jobless rate, at 3.4%, is up one-tenth of one percent from January 2025 (3.3%) and now higher by two-tenths of one percent from a year ago (3.2%). *This labor statistics report presents current estimated data from two different monthly surveys (residential and establishment) produced by the U.S. Bureau of Labor Statistics (BLS) in partnership with the states.*

“This is the third February in a row with a jobs decline following a January increase. February 2025 may be continuing this monthly pattern consistent with overall job growth over the course of the year,” said Patrick Flaherty, Director of the Office of Research at the Connecticut Department of Labor. “February was colder this year than in recent years which may have also contributed to the jobs decline.”

Connecticut’s private sector employment also declined 1,200 positions (-0.1%) over-the-month in February 2025 to 1,481,800 but still up by 12,400 jobs (0.8%) from the February 2024 level of 1,469,400. January’s preliminary private sector gain of 1,900 jobs (-0.1%) was adjusted lower by 700 to a 1,200 increase (0.1%). The **government supersector** was unchanged (0.0%) in February to a level of 234,600 jobs and is now just marginally higher by 500 (0.2%) positions over the year. *Connecticut’s aggregate government supersector consists of all civilian federal, state, local, and tribal government employment, including public education and Native American casino jobs located on federally recognized tribal reservations.*

Two of the ten major industry *supersectors* increased jobs in February 2025, while five declined, and the Government, Financial Activities, and Other Services *supersectors* were unchanged.

The five industry *supersectors* that increased employment or were unchanged in February 2025 included:

| Increasing Supersectors | | | |
|----------------------------------|--------------------|----------------|--------------------------|
| Industry Supersector | Amount of Increase | Percent Change | February 2025 Employment |
| Education & Health Services | +900 | 0.2% | 372,800 |
| Professional & Business Services | +300 | 0.1% | 223,000 |
| Government | Unchanged | 0.0% | 234,600 |
| Financial Activities | Unchanged | 0.0% | 119,300 |
| Other Services | Unchanged | 0.0% | 64,200 |

The five industry *supersector* that declined in jobs in February 2025 were:

| Decreasing Supersectors | | | |
|------------------------------------|--------------------|----------------|--------------------------|
| Industry Supersector | Amount of Decrease | Percent Change | February 2025 Employment |
| Leisure & Hospitality | -700 | -0.4% | 155,600 |
| Manufacturing | -600 | -0.4% | 154,600 |
| Trade, Transportation, & Utilities | -600 | -0.2% | 299,500 |
| Construction & Mining | -400 | -0.6% | 62,400 |
| Information | -100 | -0.3% | 30,400 |

Connecticut Labor Market Areas (LMAs): All five of the new major Connecticut **LMAs** (5 Metros formed from the CT Councils of Governments or COG regions) that are seasonally adjusted by the BLS (about 93.7% of the state) tallied nonfarm payroll job declines in February 2025. The largest **Hartford-West Hartford-East Hartford LMA** (-0.3%, 607,300) decreased by 1,700 jobs, and the second largest LMA, the **Bridgeport-Stamford-Danbury LMA** (-0.3%, 409,100), dropped 1,300 positions last month. Also declining 1,000 payrolls was the third largest **New Haven LMA** (-0.3%, 294,800) while the fourth largest **Waterbury-Shelton LMA** (-0.3%, 161,100) decreased by 500 jobs. The smallest of CT's five major labor markets, the **Norwich-New London-Willimantic LMA** (-0.2%, 128,400), also lost 300 jobs.

Note: The new five major Connecticut LMAs are independently estimated from the statewide data by the BLS and cover over 93% of the nonfarm employment in the state. Thus, estimates will not exactly sum to the statewide total. Furthermore, monthly Seasonal Adjustment (SA) on these 5 new designated COG-based labor markets may undergo some shifting seasonality effects due to the concurrent seasonal process exaggerating some movements on the new geographies due to the lack of more precise historical seasonal factors (because the metros are new). For instance, this month, the five major CT LMA's collectively show a much bigger OTM SA employment drop than the state itself.

Hours and Earnings: The February 2025 **private sector** average workweek, *not seasonally adjusted*, averaged 33.3 hours (AWH). This is up four-tenths of an hour from the February 2024 average (1.2%, 32.9). Average hourly earnings (AHE) at \$39.14 in February 2025, *not seasonally adjusted*, were up by \$1.65 (4.4%) from the February 2024 estimate of \$37.49. The subsequent February 2025 private sector average weekly earnings (AWE) were estimated at \$1,303.36, higher by \$69.94 (5.7%) from a year ago (\$1,233.42). The Consumer Price Index for All Urban Consumers (CPI-U, U.S. City Average, *not seasonally adjusted - all items index*) for February 2025 was up 2.8% from a year ago. CT private sector all-employee wages are continuing to stay ahead of inflation.

Note: Current all-employee private sector hours and earnings estimates can be volatile due to fluctuating sample responses.

Labor Force Data (residential household survey)

The preliminary February 2025 unemployment rate for Connecticut was calculated by the BLS Local Area Unemployment Statistics program (LAUS) to be **3.4%** (seasonally adjusted). This is up from January 2025, when it was 3.3%. CT's unemployment rate is up two-tenths of a percentage point from a year ago (3.2%). The U.S. unemployment rate for February 2025 was 4.1%, also up one-tenth of one percent from the January 2025 rate and higher over the year from 3.9% in February 2024.

Average weekly initial unemployment claims (*not seasonally adjusted*) for first-time filers (AWIC) in Connecticut for February 2025 were 2,745. This is 1,314 (-32.4%) claims lower than January 2025 (4,059) and lower by 102 claims (-3.6%) than the February 2024 (2,847) level. Claims are still lower over the year.

The nonfarm employment estimate, derived from a survey of businesses, is a measure of jobs in the state; the unemployment rate and labor force estimates are based on a household survey and measure the work status of people who live in Connecticut. Because of the distinct differences both in concept and scope between the two estimates, nonfarm employment and unemployment do not necessarily move in the same economic direction month to month. Job and employment estimates are best understood in the context of their movement over several months rather than observed changes in a single month's value.

Next Connecticut Labor Situation release: Thursday, April 17, 2025
(Preliminary March 2025 data)

Contact: Communications, CT Department of Labor
CTDOL.Communications@ct.gov

Labor Market Information is available at: www.ctworkforce.info
200 Folly Brook Boulevard, Wethersfield, CT 06109-1114 www.ct.gov/dol
An Equal Opportunity/Affirmative Action Employer

NONFARM EMPLOYMENT

Jobs - by Place of Work

CONNECTICUT AND THE UNITED STATES - *Seasonally Adjusted*

| | February 2025 P | January 2025 R | December 2024 | November 2024 | February 2024 | Over Month Change | Over Month Rate | Over Year Change | Over Year Rate |
|-------------------------------------|--------------------|--------------------|--------------------|--------------------|--------------------|----------------------|--------------------|---------------------|-------------------|
| CONNECTICUT | 1,716,400 | 1,717,600 | 1,716,100 | 1,712,600 | 1,703,500 | -1,200 | -0.1% | 12,900 | 0.8% |
| Total Private | 1,481,800 | 1,483,000 | 1,481,800 | 1,478,200 | 1,469,400 | -1,200 | -0.1% | 12,400 | 0.8% |
| Goods Producing Industries | | | | | | | | | |
| Mining | 500 | 500 | 500 | 500 | 500 | 0 | 0.0% | 0 | 0.0% |
| Construction | 61,900 | 62,300 | 63,100 | 63,100 | 62,500 | -400 | -0.6% | -600 | -1.0% |
| Manufacturing | 154,600 | 155,200 | 155,400 | 155,500 | 156,300 | -600 | -0.4% | -1,700 | -1.1% |
| Durable Goods | 121,500 | 121,700 | 122,100 | 122,100 | 122,500 | -200 | -0.2% | -1,000 | -0.8% |
| Nondurable Goods | 33,100 | 33,500 | 33,300 | 33,400 | 33,800 | -400 | -1.2% | -700 | -2.1% |
| Service Providing Industries | | | | | | | | | |
| Trade, Transportation & Utilities | 299,500 | 300,100 | 299,600 | 298,900 | 299,200 | -600 | -0.2% | 300 | 0.1% |
| Wholesale | 61,200 | 61,600 | 61,300 | 61,100 | 60,900 | -400 | -0.6% | 300 | 0.5% |
| Retail | 164,400 | 164,900 | 165,400 | 164,200 | 166,200 | -500 | -0.3% | -1,800 | -1.1% |
| Transp, Warehousing & Utilities | 73,900 | 73,600 | 72,900 | 73,600 | 72,100 | 300 | 0.4% | 1,800 | 2.5% |
| Information | 30,400 | 30,500 | 30,500 | 30,200 | 30,700 | -100 | -0.3% | -300 | -1.0% |
| Financial Activities | 119,300 | 119,300 | 118,600 | 118,500 | 117,600 | 0 | 0.0% | 1,700 | 1.4% |
| Finance & Insurance | 99,200 | 99,300 | 98,700 | 98,600 | 98,100 | -100 | -0.1% | 1,100 | 1.1% |
| Real Estate, Rental & Leasing | 20,100 | 20,000 | 19,900 | 19,900 | 19,500 | 100 | 0.5% | 600 | 3.1% |
| Professional & Business Services | 223,000 | 222,700 | 221,400 | 221,600 | 220,900 | 300 | 0.1% | 2,100 | 1.0% |
| Prof, Scientific & Tech Services | 101,800 | 101,900 | 100,900 | 101,200 | 101,000 | -100 | -0.1% | 800 | 0.8% |
| Management of Companies | 30,800 | 30,900 | 31,000 | 30,900 | 30,900 | -100 | -0.3% | -100 | -0.3% |
| Admn & Support & Waste Mgt Serv | 90,400 | 89,900 | 89,500 | 89,500 | 89,000 | 500 | 0.6% | 1,400 | 1.6% |
| Educational & Health Services | 372,800 | 371,900 | 371,700 | 370,800 | 363,300 | 900 | 0.2% | 9,500 | 2.6% |
| Private Educational Services | 75,000 | 74,700 | 75,100 | 75,300 | 73,400 | 300 | 0.4% | 1,600 | 2.2% |
| Health Care & Social Assistance | 297,800 | 297,200 | 296,600 | 295,500 | 289,900 | 600 | 0.2% | 7,900 | 2.7% |
| Leisure and Hospitality | 155,600 | 156,300 | 156,900 | 154,900 | 154,700 | -700 | -0.4% | 900 | 0.6% |
| Arts, Entertainment & Recreation | 27,600 | 27,800 | 28,300 | 28,000 | 28,600 | -200 | -0.7% | -1,000 | -3.5% |
| Accommodation & Food Services | 128,000 | 128,500 | 128,600 | 126,900 | 126,100 | -500 | -0.4% | 1,900 | 1.5% |
| Other Services | 64,200 | 64,200 | 64,100 | 64,200 | 63,700 | 0 | 0.0% | 500 | 0.8% |
| Government** | 234,600 | 234,600 | 234,300 | 234,400 | 234,100 | 0 | 0.0% | 500 | 0.2% |
| UNITED STATES | 159,218,000 | 159,067,000 | 158,942,000 | 158,619,000 | 157,271,000 | 151,000 | 0.1% | 1,947,000 | 1.2% |

LABOR MARKET AREAS (LMAs, COG-based)

Labor Market Area employment estimates are made independently of Statewide estimates.

| <i>Seasonally Adjusted data (Metros)</i> <i>Metropolitan Statistical Areas (5 CT MSAs)</i> | February 2025 P | January 2025 R | December 2024 | November 2024 | February 2024 | Over Month Change | Over Month Rate | Over Year Change | Over Year Rate |
|----------------------------------------------------------------------------------------------------------------------------------|--------------------|-------------------|------------------|------------------|------------------|----------------------|--------------------|---------------------|-------------------|
| Bridgeport-Stamford-Danbury | 409,100 | 410,400 | 410,500 | 409,200 | 406,500 | -1,300 | -0.3% | 2,600 | 0.6% |
| Hartford | 607,300 | 609,000 | 610,600 | 609,300 | 607,500 | -1,700 | -0.3% | -200 | 0.0% |
| New Haven | 294,800 | 295,800 | 295,700 | 294,400 | 293,500 | -1,000 | -0.3% | 1,300 | 0.4% |
| Norwich-New London-Willimantic | 128,400 | 128,700 | 128,300 | 127,600 | 126,900 | -300 | -0.2% | 1,500 | 1.2% |
| Waterbury - Shelton | 161,100 | 161,600 | 162,100 | 161,000 | 160,400 | -500 | -0.3% | 700 | 0.4% |
| <i>Not Seasonally Adjusted data (Non-Classified Areas, 2 Micropolitan Statistical Areas - Micros, State estimated - not BLS)</i> | | | | | | | | | |
| Putnam - Northeastern | 28,000 | 28,200 | 28,800 | 28,900 | 28,400 | -200 | -0.7% | -400 | -1.4% |
| Torrington - Northwest Hills | 37,100 | 37,400 | 38,100 | 38,200 | 36,400 | -300 | -0.8% | 700 | 1.9% |

* Less than 0.05% ** Includes Native American tribal government employment

P = Preliminary

R = Revised

Starting in March, 2011, our monthly statewide and major LMA nonfarm job estimates have been taken over by the US Department of Labor Bureau of Labor Statistics. This is the final phase of transition in this program, which began in 2008. As a result of changes in the estimation procedures, you are likely to see more variability in month-to-month estimates of job counts. Caution should be used in interpreting any single month's estimate. The data are best interpreted to identify trends and cycles over several months and quarters. If you have any questions about these changes, please email us at: dol.lmi@ct.gov. COG - Council of Government regions.

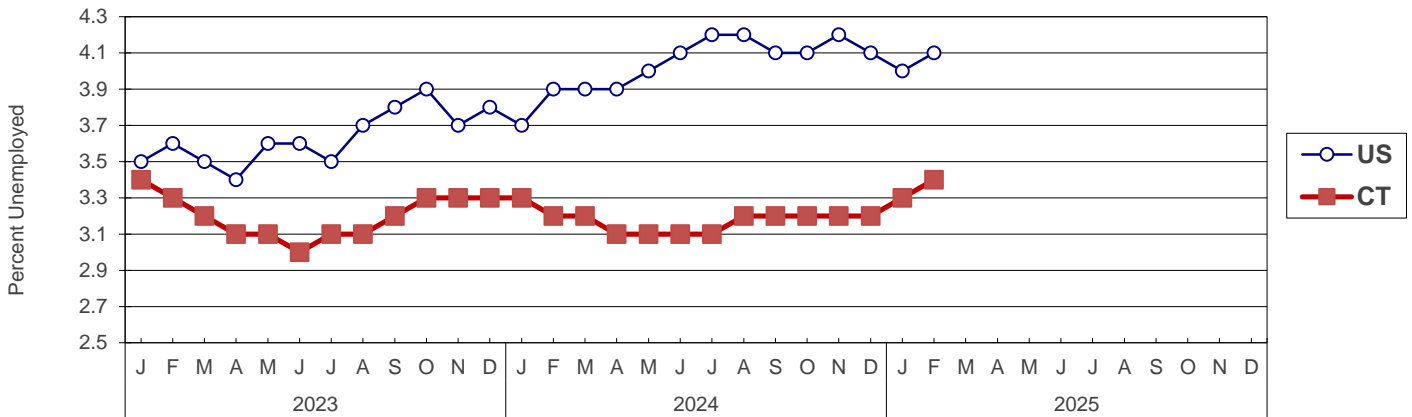
UNEMPLOYMENT

Persons Unemployed - by Place of Residence

CONNECTICUT AND THE UNITED STATES - Seasonally Adjusted

| | Feb 2025 P | | Feb 2024 R | | Change | | Jan 2025 R | |
|----------------------|-------------|------|-------------|------|-----------|--------|-------------|------|
| | Number | Rate | Number | Rate | Number | Points | Number | Rate |
| CONNECTICUT | | | | | | | | |
| Unemployed | 66,400 | 3.4 | 62,500 | 3.2 | 3,900 | 0.2 | 63,800 | 3.3 |
| Labor Force | 1,957,000 | | 1,929,700 | | 27,300 | | 1,957,300 | |
| UNITED STATES | | | | | | | | |
| Unemployed | 7,052,000 | 4.1 | 6,462,000 | 3.9 | 590,000 | 0.2 | 6,849,000 | 4.0 |
| Labor Force | 170,359,000 | | 167,475,000 | | 2,884,000 | | 170,744,000 | |

U.S. AND CONNECTICUT UNEMPLOYMENT RATES - Seasonally Adjusted 2023 - 2025



LABOR MARKET AREAS - Not Seasonally Adjusted

| | Feb 2025 P | | Feb 2024 R | | Change | | Jan 2025 R | |
|-------------------------|------------------|------------|------------------|------------|----------------|------------|------------------|------------|
| | Number | Rate | Number | Rate | Number | Points | Number | Rate |
| Bridpt-Stamford-Danbury | 22,100 | 4.3 | 19,000 | 3.7 | 3,100 | 0.6 | 19,600 | 3.8 |
| Hartford-W.Htfd-E.Htfd | 27,100 | 4.4 | 22,800 | 3.8 | 4,300 | 0.6 | 24,300 | 3.9 |
| New Haven | 13,500 | 4.3 | 11,600 | 3.7 | 1,900 | 0.6 | 12,300 | 3.9 |
| Norwich-New Lon.-Willi. | 6,200 | 4.4 | 5,300 | 3.8 | 900 | 0.6 | 5,700 | 3.9 |
| Putnam-Northeast | 2,000 | 4.8 | 1,600 | 4.0 | 400 | 0.8 | 1,800 | 4.2 |
| Torrington-Northwest | 2,100 | 4.6 | 1,800 | 4.1 | 300 | 0.5 | 1,900 | 4.1 |
| Waterbury-Shelton | 12,200 | 5.1 | 10,500 | 4.4 | 1,700 | 0.7 | 11,100 | 4.6 |
| CONNECTICUT | 86,400 | 4.5 | 73,600 | 3.8 | 12,800 | 0.7 | 77,400 | 4.0 |
| UNITED STATES | 7,572,000 | 4.5 | 6,970,000 | 4.2 | 602,000 | 0.3 | 7,467,000 | 4.4 |

P = Preliminary

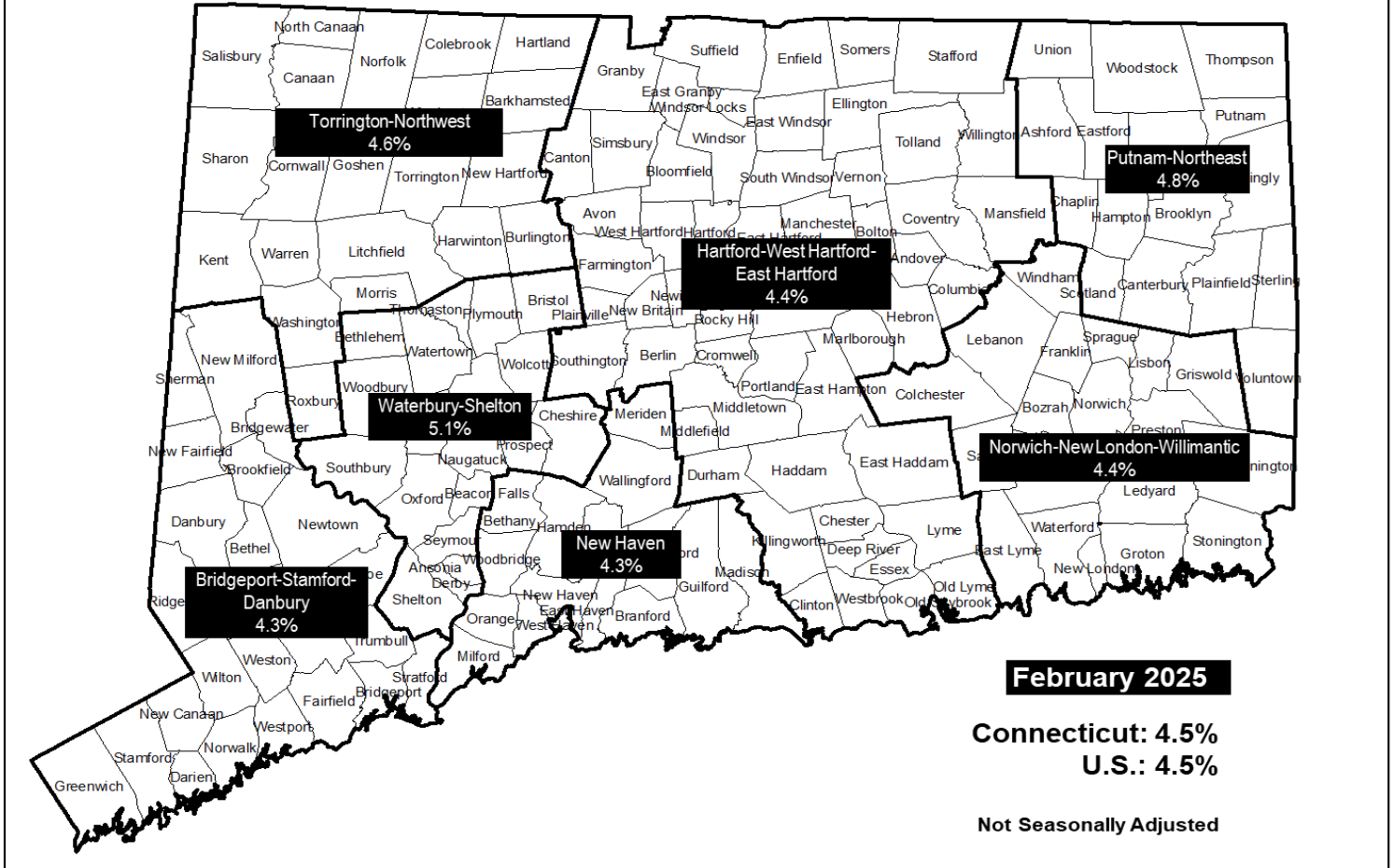
R = Revised

Labor force data included in this publication are developed in cooperation with the U.S. Department of Labor, Bureau of Labor Statistics.

UNEMPLOYMENT RATES

Not Seasonally Adjusted

Labor Market Areas



HOURS AND EARNINGS

CONNECTICUT Statewide - Not Seasonally Adjusted

| | Average Weekly Earnings | | | | Average Weekly Hours | | | | Average Hourly Earnings | | | |
|---------------------------------------|-------------------------|------------|-----------------|-------------|----------------------|-----------|-----------------|-------------|-------------------------|-----------|-----------------|-------------|
| | Feb. 2025 P | Feb. 2024 | Change over Yr. | Jan. 2025 R | Feb. 2025 P | Feb. 2024 | Change over Yr. | Jan. 2025 R | Feb. 2025 P | Feb. 2024 | Change over Yr. | Jan. 2025 R |
| Private Industry All Employees | \$1,303.36 | \$1,233.42 | \$69.94 | \$1,293.14 | 33.3 | 32.9 | 0.4 | 33.2 | \$39.14 | \$37.49 | \$1.65 | \$38.95 |
| Manufacturing* | | | | | | | | | | | | |
| Production Workers | \$1,229.58 | \$1,186.94 | \$42.64 | \$1,233.19 | 39.6 | 38.4 | 1.2 | 39.5 | \$31.05 | \$30.91 | \$0.14 | \$31.22 |

* Production worker data have been impacted by the loss of a large, high-paying manufacturer from the monthly sample.

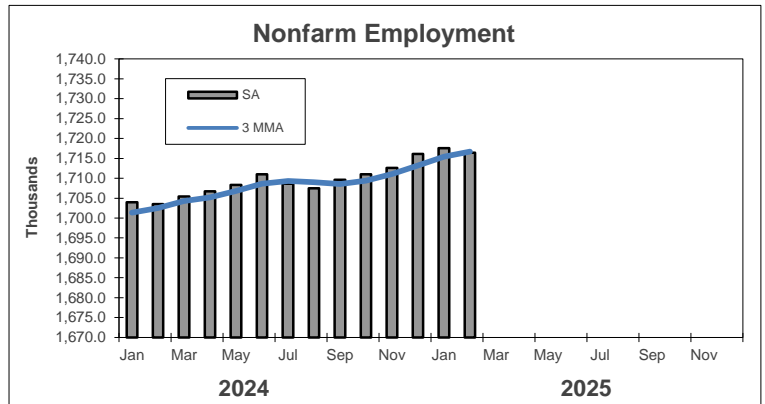
P = Preliminary R = Revised

Hours and earnings are also developed for the state's major industry sectors and Labor Market Areas. They can be found on our website at: www1.ctdol.state.ct.us/lmi

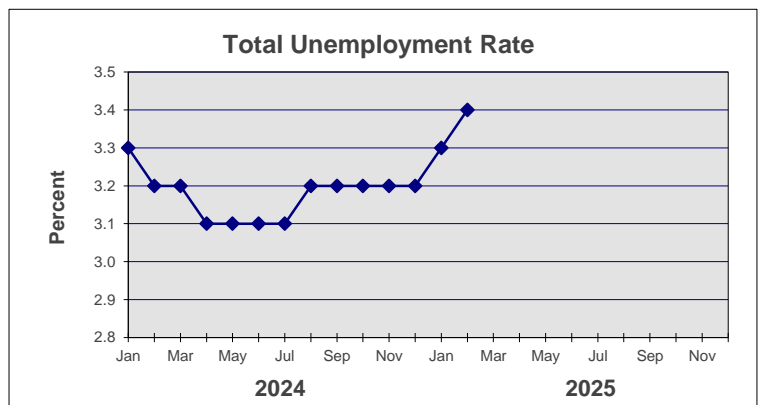
TRENDS

Seasonally Adjusted

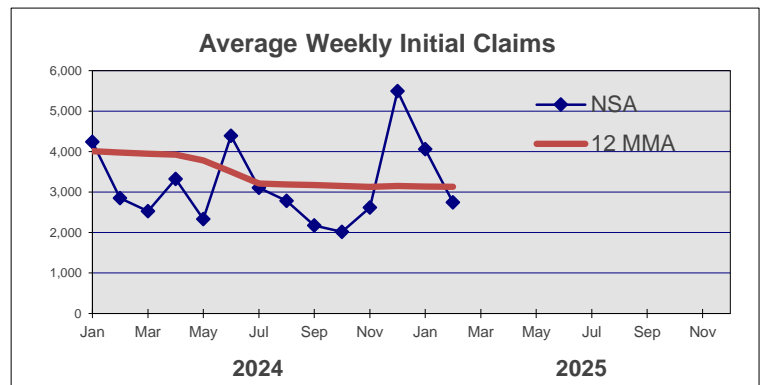
| | Nonfarm Employment (000s) | Total Unemployment Rate |
|-------------|------------------------------|----------------------------|
| 2024 | | |
| Jan | 1,704.0 | 3.3 |
| Feb | 1,703.5 | 3.2 |
| Mar | 1,705.4 | 3.2 |
| Apr | 1,706.7 | 3.1 |
| May | 1,708.3 | 3.1 |
| Jun | 1,711.0 | 3.1 |
| Jul | 1,708.6 | 3.1 |
| Aug | 1,707.5 | 3.2 |
| Sep | 1,709.6 | 3.2 |
| Oct | 1,711.0 | 3.2 |
| Nov | 1,712.6 | 3.2 |
| Dec | 1,716.1 | 3.2 |



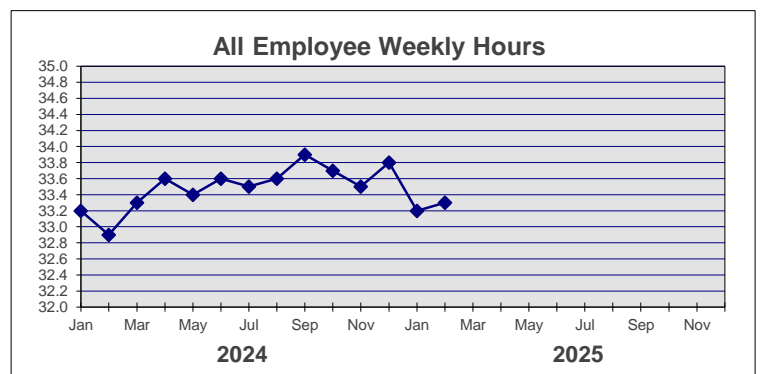
| | | |
|-------------|-----------|-------|
| 2025 | | |
| Jan | 1,717.6 R | 3.3 R |
| Feb | 1,716.4 P | 3.4 P |
| Mar | | |
| Apr | | |
| May | | |
| Jun | | |
| Jul | | |
| Aug | | |
| Sep | | |
| Oct | | |
| Nov | | |
| Dec | | |



| | NSA Avg Weekly Initial Claims | All Employee Weekly Hours* |
|-------------|----------------------------------|-------------------------------|
| 2024 | | |
| Jan | 4,239 | 33.2 |
| Feb | 2,847 | 32.9 |
| Mar | 2,525 | 33.3 |
| Apr | 3,324 | 33.6 |
| May | 2,331 | 33.4 |
| Jun | 4,389 | 33.6 |
| Jul | 3,109 | 33.5 |
| Aug | 2,780 | 33.6 |
| Sep | 2,173 | 33.9 |
| Oct | 2,017 | 33.7 |
| Nov | 2,621 | 33.5 |
| Dec | 5,495 | 33.8 |



| | | |
|-------------|-------|--------|
| 2025 | | |
| Jan | 4,059 | 33.2 R |
| Feb | 2,745 | 33.3 P |
| Mar | | |
| Apr | | |
| May | | |
| Jun | | |
| Jul | | |
| Aug | | |
| Sep | | |
| Oct | | |
| Nov | | |
| Dec | | |



* Not seasonally adjusted

P = Preliminary

R = Revised

** Labor-management dispute